



# Trevira II

# Durach

Sonnenschutz | Blendschutz | Raumakustik

# Trevira II



Rollo



Paneele



Gardine



Raumakustik



DIN 4102 B1



Preisgruppe 2

Textiles Gewebe aus 100 % Trevira CS, halbtransparent, mit besonders weichem Charakter, geeignet für den Privat- und Objektbereich.

	Material	100% Trevira CS
	Stoffbreite	340 cm
	Warengewicht	260 g/m <sup>2</sup>
	Materialdicke	0,45 mm
	Lichtechtheit	7
	Schallabsorption	$\alpha_w = 0,3$ (Schallabsorberklasse D) nach DIN EN ISO 354 / ISO 11654
	Brandverhalten	schwer entflammbar nach DIN 4102 B1, M1 (NF P 92-503)
	Umweltstandards	Öko-Tex® Standard 100, REACH
	Reinigung	Bei Verschmutzungen empfehlen wir eine Reinigung durch einen Fachbetrieb der Sonnenschutzreiniger ( <a href="http://www.vds-sonnenschutz.de">www.vds-sonnenschutz.de</a> )

## Thermische Leistungswerte

		TS	RS	AS		TS	RS	AS	
2-2400	Reinweiß	37	60	3	2-2416	Hellgrau	30	51	19
2-2401	Weiß	35	56	9	2-2417	Himmelblau	16	30	54
2-2402	Cremeweiß	30	52	18	2-2418	Eisblau	29	48	23
2-2403	Sahara	28	50	22	2-2419	Aqua	28	46	26
2-2404	Braungrau	30	36	34	2-2420	Petrol	24	41	35
2-2405	Nougatbraun	23	35	42	2-2421	Smaragd	25	42	33
2-2406	Dunkelbraun	19	44	37	2-2422	Jägergrün	28	40	32
2-2407	Mittelbraun	30	36	34	2-2423	Absinth	26	40	34
2-2408	Graubeige	26	35	39	2-2424	Olive	28	42	30
2-2409	Warm light grey	27	34	39	2-2425	Gelb	29	49	22
2-2410	Silver	27	34	39	2-2426	Ginger	28	50	22
2-2411	Cool light grey	30	51	19	2-2427	Ziegelrot	26	48	26
2-2412	Grau	26	47	27	2-2428	Ahornrot	19	44	37
2-2413	Mittelgrau	19	44	37	2-2429	Purpurrot	19	44	37
2-2414	Blaugrau	18	46	36	2-2430	Schwarz	16	40	44
2-2415	Dunkelblau	16	40	44					

TS = Transmission, RS = Reflexion, AS = Absorption

Alle angegebenen Werte unterliegen den üblichen produktionstechnischen Schwankungen und sind somit unverbindlich.

# Durach

Sonnenschutz | Blendschutz | Raumakustik



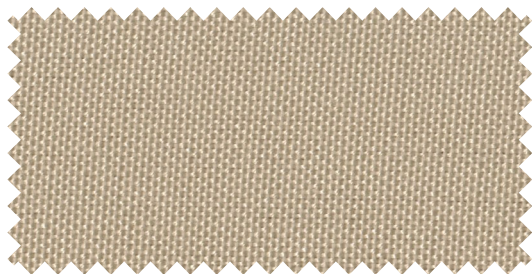
**2-2400 Reinweiß**



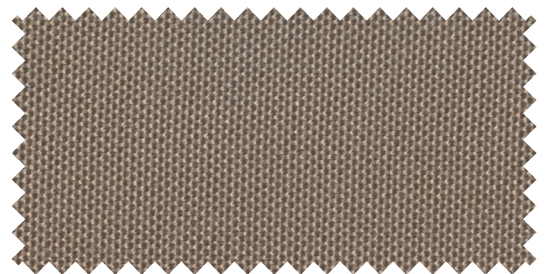
**2-2401 Weiß**



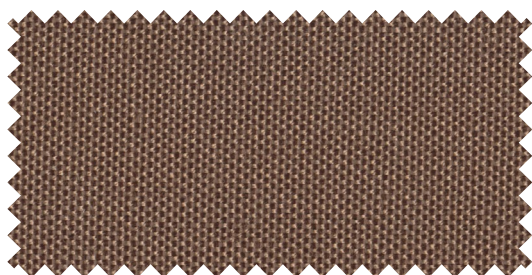
**2-2402 Cremeweiß**



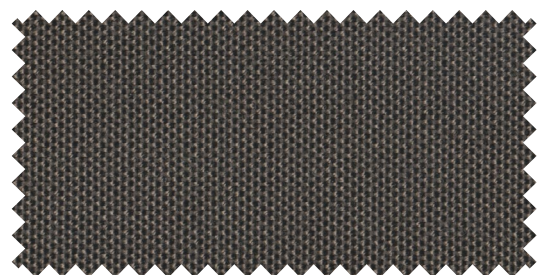
**2-2403 Sahara**



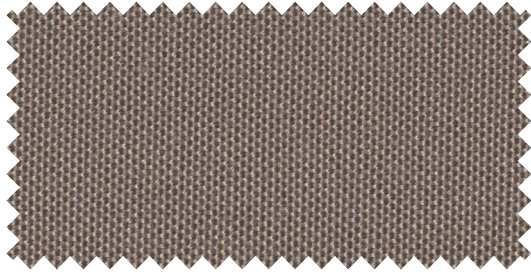
**2-2404 Braungrau**



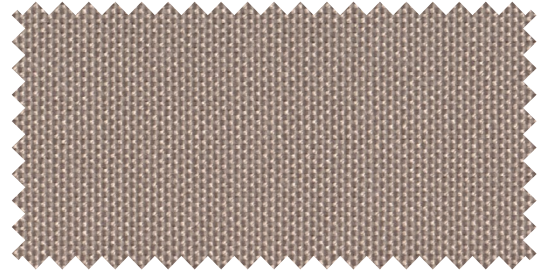
**2-2405 Nougatbraun**



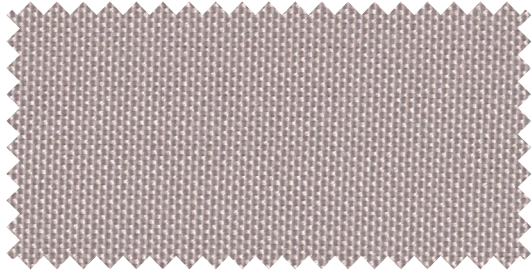
**2-2406 Dunkelbraun**



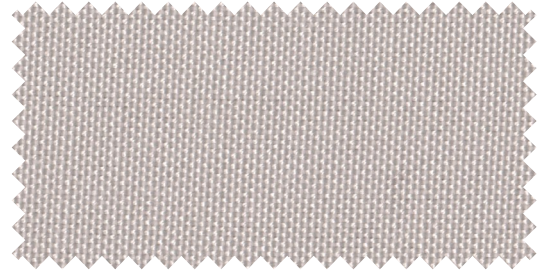
2-2407 Mittelbraun



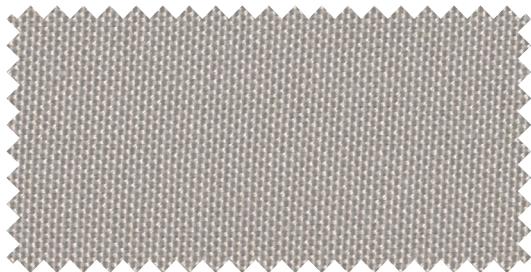
2-2408 Graubeige



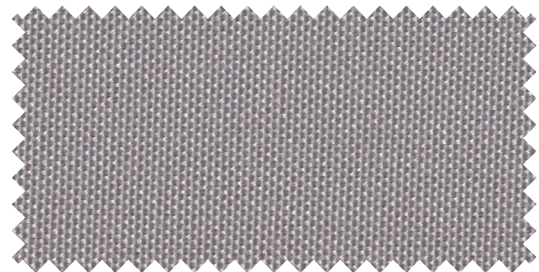
2-2409 Warm light grey



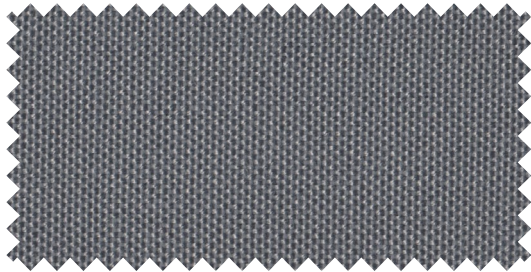
2-2410 Silver



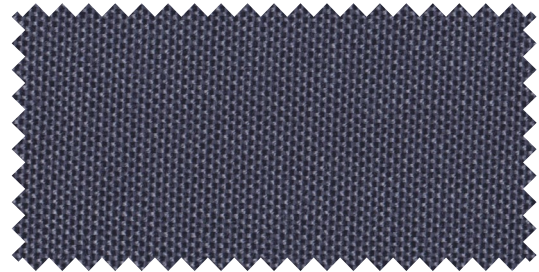
2-2411 Cool light grey



2-2412 Grau



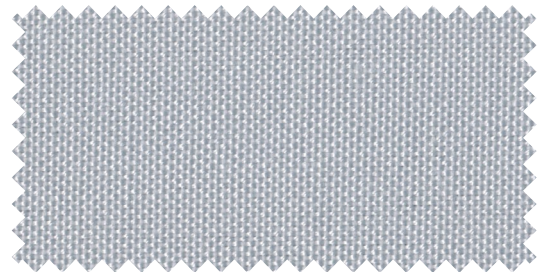
2-2413 Mittelgrau



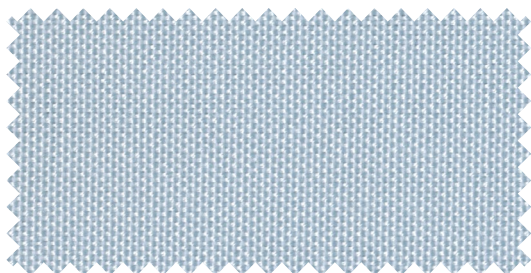
2-2414 Blaugrau



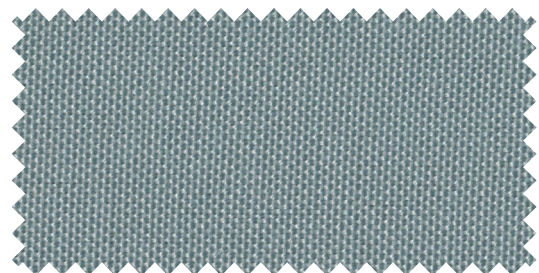
2-2415 Dunkelblau



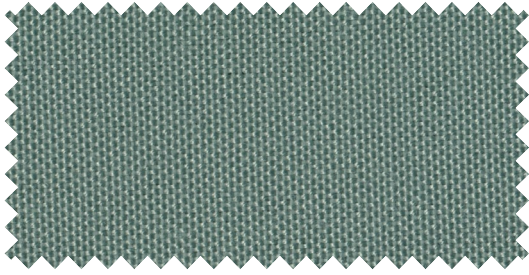
2-2416 Hellgrau



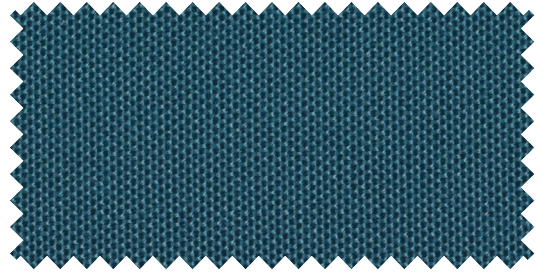
2-2417 Himmelblau



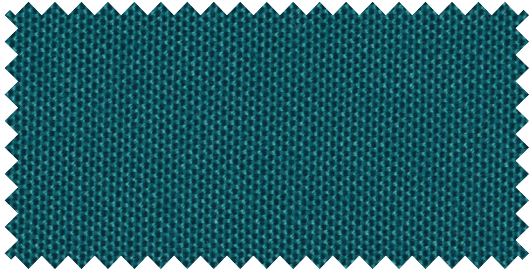
2-2418 Eisblau



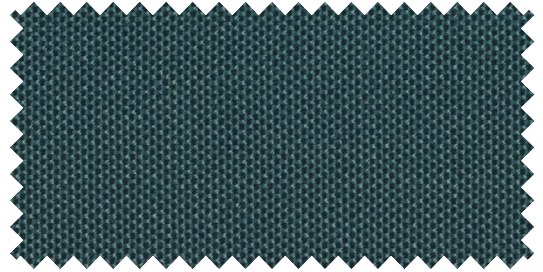
2-2419 Aqua



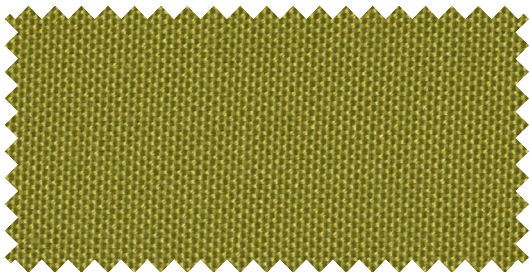
2-2420 Petrol



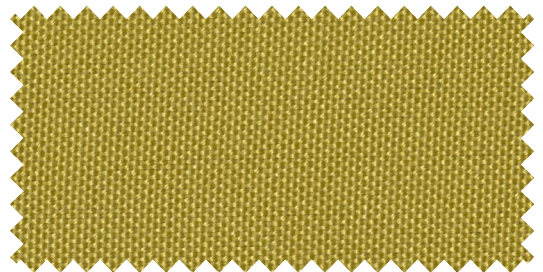
2-2421 Smaragd



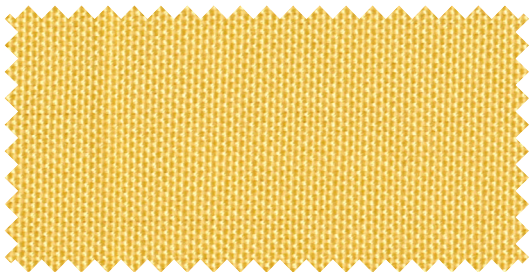
2-2422 Jägergrün



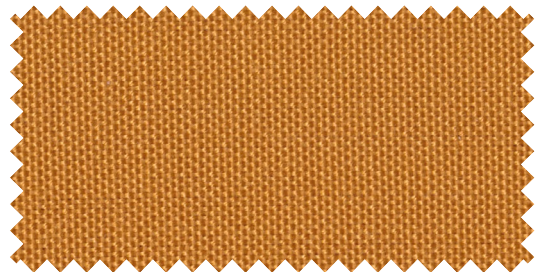
2-2423 Absinth



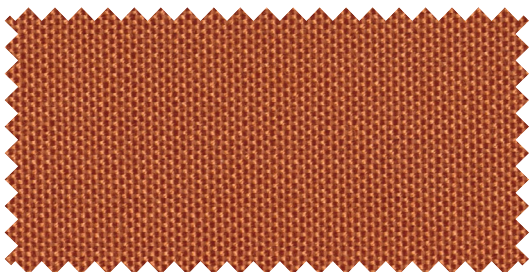
2-2424 Olive



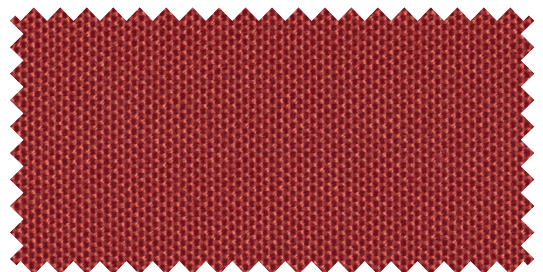
2-2425 Gelb



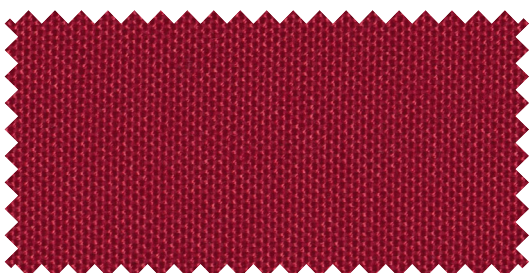
2-2426 Ginger



2-2427 Ziegelrot



2-2428 Ahornrot



2-2429 Purpurrot



2-2430 Schwarz

**Durach GmbH**

Alte Bahnlinie 20 | D-88299 Leutkirch  
Tel. 07567 98884-0 | Fax 07567 98884-20  
www.durach.com | info@durach.com

**Durach**

Sonnenschutz | Blendschutz | Raumakustik

© Durach GmbH, 07/2019  
Art. Nr. M-1239